



**H&H HEALTHCARE AND
COSMETICS PVT LTD**
Care. Health. Wellness





Asia's Biggest Capacity Nutraceutical Manufacturing Plant

About Us:

Third Party - Contract manufacturing for multinational and Indian companies, including exports.

B2B – Business to Business (P2P) product manufacturing and sales.

LL – Loan License – Business to Business product processing conversions.

New product **Research & Development** to associated businesses in India and abroad for enhancing their product portfolios and formulations.

Asia's Biggest Capacity Nutraceutical Manufacturing Plant

Plants Features

- ☐ Plant Location - Indore - MP- Central India (Logistical Advantage).
- ☐ Manufacturing Area – Lean Design, ISO Class 8 Manufacturing Area.
- ☐ Highly sophisticated and technologically equipped Manufacturing, R&D, Quality, Analytical and Microbiology Lab.
- ☐ Purified water system- RO,EDI & Ultrafiltration-USP Grade.
- ☐ Utilities – Transformer, DG set, Boiler, Water Chillers, Oil free Air Compressor.
- ☐ ETP – Effluent Treatment Plant – ZLD – Zero Liquid Discharge. (Environmental Friendly)
- ☐ Dedicated Air Handling units (AHUs and DHUs) with automatic Environmental control & Monitoring System.
- ☐ Boundary wall made from fly ash bricks.
- ☐ No water bore well at site, Good quality treated water supply for process.
- ☐ Rainwater harvesting system.
- ☐ Fire hydrant system.
- ☐ Trained, highly skilled and experienced manpower.

Accreditations & Certifications



Triggered >



Plant Location



- I. Research and Development
- II. Warehouse
- III. Powder Line
- IV. Soft gel Line
- V. Tablet and Hard Gelatine Capsule Line
- VI. Quality Management System
- VII. Quality Control



- In house Research and Development Lab
- Literature Study and Innovative research Formulation Development
- Process & Cost optimization
- Development is going on for 50+ Formulations,
- Analytical Lab with latest testing equipment
- Variety of Lab scale and Pilot scale equipment
- Walk in stability chambers, stability study as per ICH - IV.
- Emphasis on Method Development and Validation
- Contract research projects with Market leading organization



Octagonal Blender



Paddle Blender



Shifter



Fluid Bed Dryer



RMG



Granulation Line



Compression



Band Sealing Machine



Moisture Analyser



IPQC Instruments



Manual Capsule Filling Machine

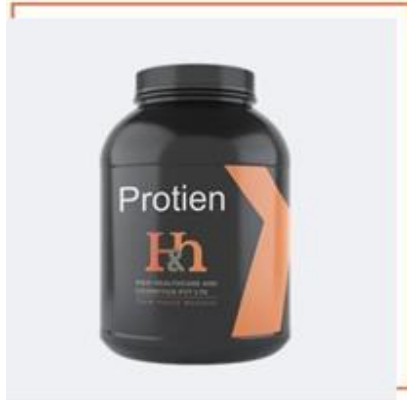


RM Store

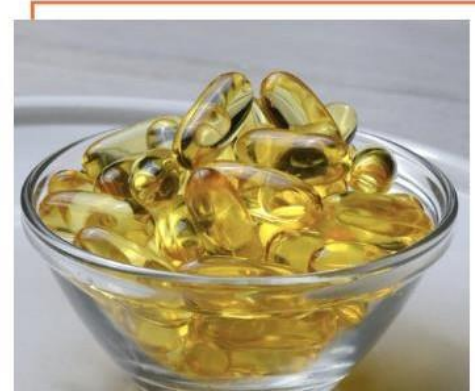


Auto Coater

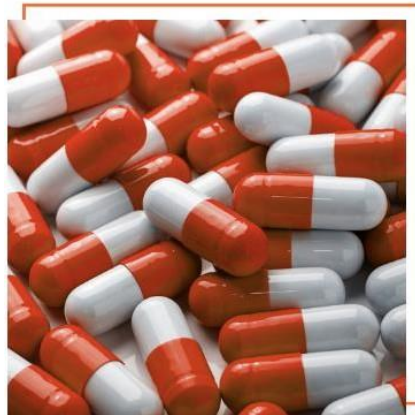
POWDERS



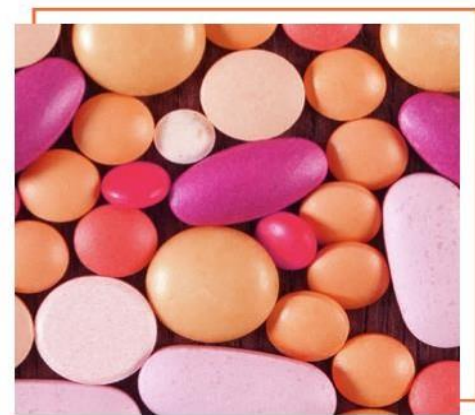
SOFT GELS



CAPSULES

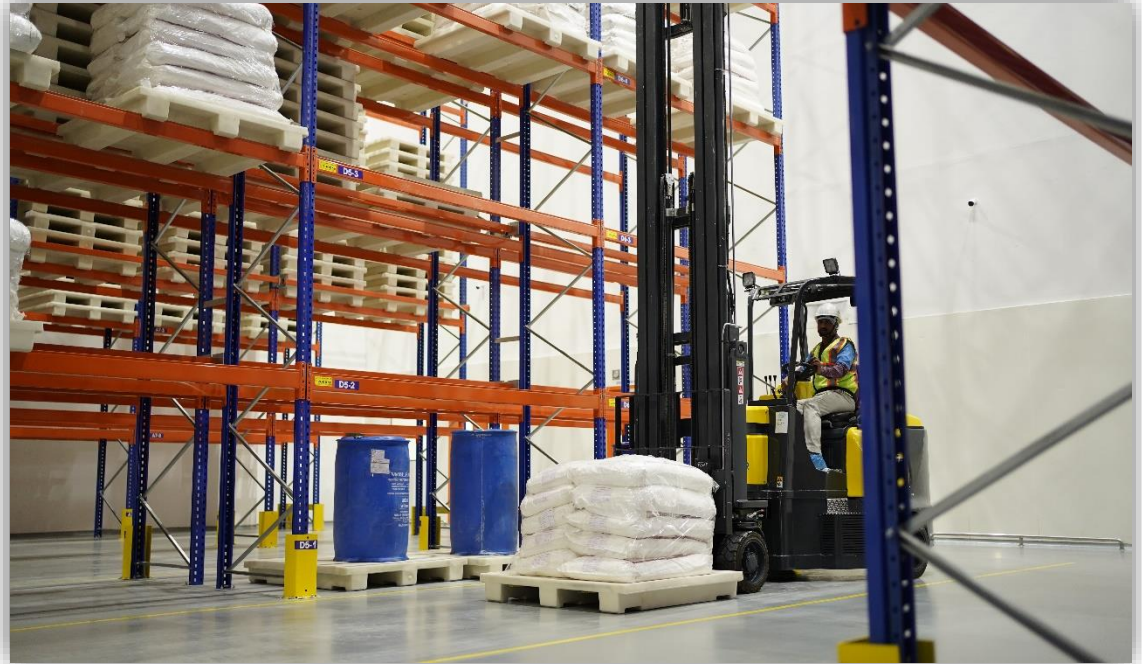


TABLETS





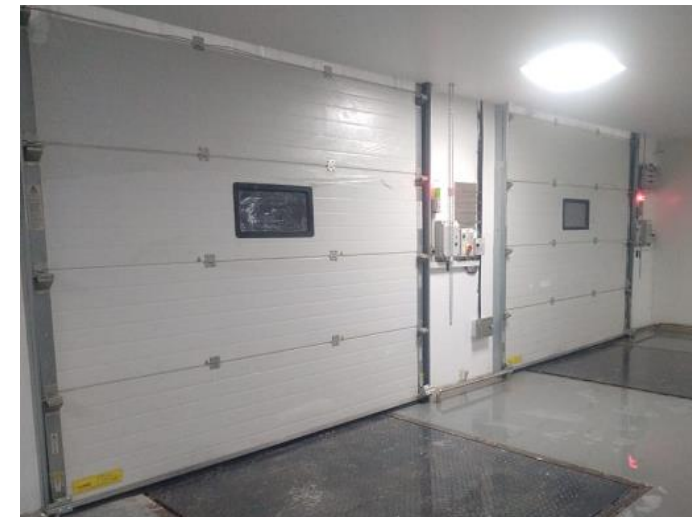
Warehouse spread in approx., 20000 Sq. Ft area.



Storage for Raw, Packing material, and Finish Goods Facilized with dedicated Racks

Efficient Storage Areas

- Raw materials, packing materials and finished goods are in controlled temperature conditions.
- Storage Conditions by design are
 - 20,000 sq. ft area (NMT 27 degrees)
 - 40,000 Ltr. Walking cold Chamber (2 to 8 degrees)
- Loading bay automation. (Dock leveller and Dock shelter)
- Separate storage for Gelatin and Primary packing materials.
- RM/PM sampling booth for receiving raw materials and Packing materials.



Our formulation range includes

Powder

- Dry blended Powder

Soft gel

- Non- Veg Gelatin Capsule
- Veg Gelatin Capsule

Tablets

- Uncoated Tablet
- Film Coated Tablet
- Sugar Coated Tablet
- Chewable Tablet

Hard Gelatin Capsule

- Non- Veg Gelatin Capsule
- Veg Gelatin Capsule

Future Expansion

- Spray Dryer Technology
- Effervescent powders and tablets
- Oral Liquids
- Diskettes

Type of Packaging

Flexible Powder Packaging



HDPE Bottle



HDPE Jar



Sachet



Pouches



Tin



Bucket

Flexible Soft gel Packaging



Transparent
/HDPE Bottle



Blister

Flexible Tablet/Capsule Packaging



Transparent
/HDPE Bottle



Blister



Alu Alu



Strip

Process	Equipment Details	Capacity	Make
Vacuum powder Transfer system	Vacuum Rated sifter	1.50 Ton/Hr	RUSSEL FINEX USA.
	Powder Transfer System	1.50 Ton/Hr	PIAB, Germany.
Mixing	Plough shear mixer	1.20 Ton/Hr	LODIGE, Germany
	Paddle Mixer	1.20 Ton/Hr	PRISM
Packaging	Pillow Pouch (5 to 100 gm)	3000 Pouches/Hr	PAKONA
	Pillow Pouch (100 to 1000 gm)	3000 Pouches/Hr	PAKONA
	HDPE bottle (50 gm to 1 kg)	1800 bottles/Hr	PAKONA
	Tin filling (200 to 400 gm.)	2400 bottles/Hr	PAKONA
	HDPE bottle (2 kg, 3 kg & 5 kg.)	900 bottles/Hr	PAKONA





Vacuum-rated sifter with vacuum
Transfer System



Vacuum-rated sifter with vacuum
Transfer System



**Inline Powder loading system (VTS) with
Plough Mixer**



**Inline Powder loading system (VTS) with
Paddle Mixer**



Close Loop Unloading line with Metal Detection



Close loop Loading system



HDPE Bottle Line Up to 1 Kg



Tin Filling Line Up 200 and 400 gm



HDPE Bottle Line 2,3 and 5 Kg



Pouch Filling Machine - 30



Pouch Filling Machine - 70



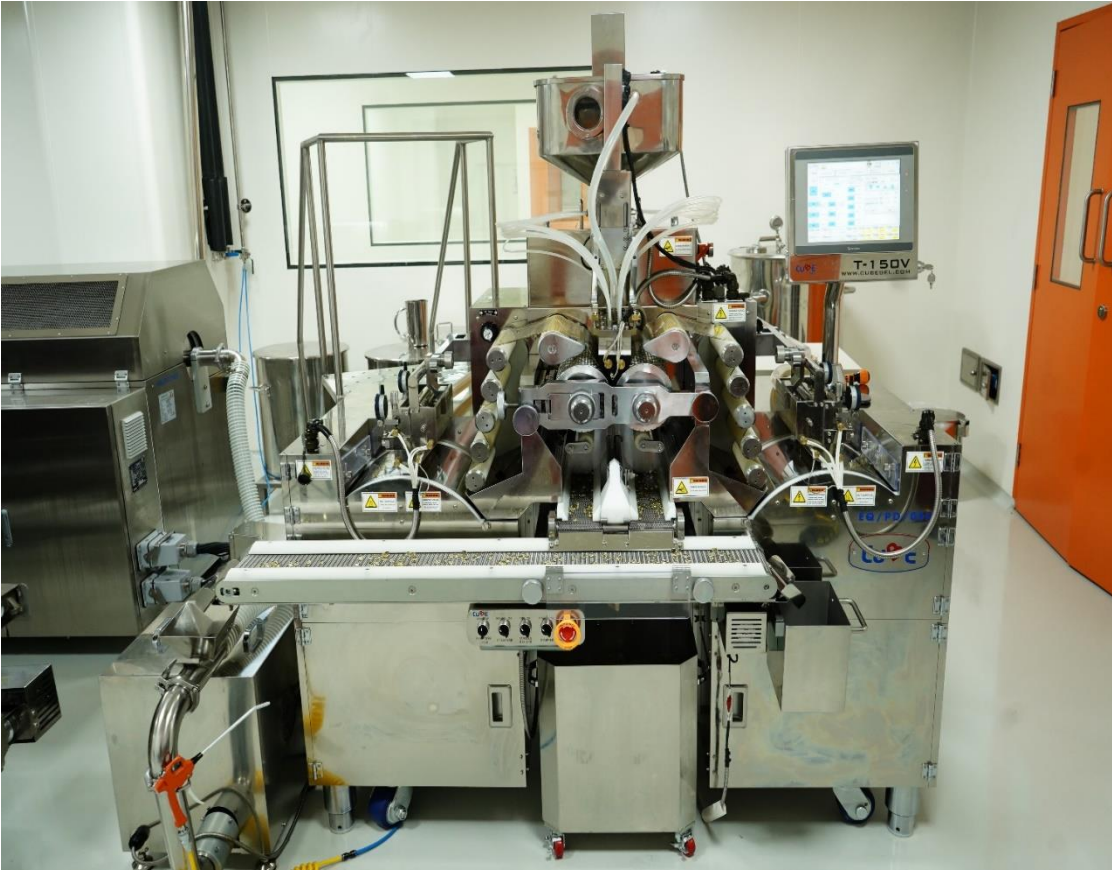
Equipment Details	Capacity	Make
Medicine Mixer	400 Kg/Hr	PARLE
VM600 (Veg & Gelatine Melting Tank)	480 Kg/ Hr	CUBE GEL, Korea.
T150V (Encapsulation Machine)	82,000 Cap/Hr	CUBE GEL, Korea.
Capsule Drying and Polishing Machine	1,25,000 Cap/Hr	PARLE



Veg and Non-Veg Melting Tank



Medicine Preparation Tank



Encapsulation Machine



Tray Dryer



Counting Filling Machine



Blister Packing Machine with BIS

Equipment Details	Capacity	Make
Granulation Line with Top Spray	120 Kg/Hr	PARLE
Dry Mixing	75kg/300kg/500 Kg	PRISM
37 D tooling	1,33,200 Tab/Hr	PARLE
27 D tooling	1,00,000 Tab/Hr	PARLE
Auto coater 48''	1,00,000 Tab/Hr	PRISM
Blister With auto cartonator	75,000 Blister/Hr	ELMACH
Alu-Alu auto cartonator	60,000 Blister/Hr	ELMACH
Strip Packing	85,000 Blister/Hr	HELIOS

Tablet & Capsule Dispensing



Close Loop Granulation Line



Compression (37 ST and 27 ST D Tooling)



Equipment Details	Capacity	Make
Capsule Filling Machine PF 40	40,000 Cap/Hr	Parle



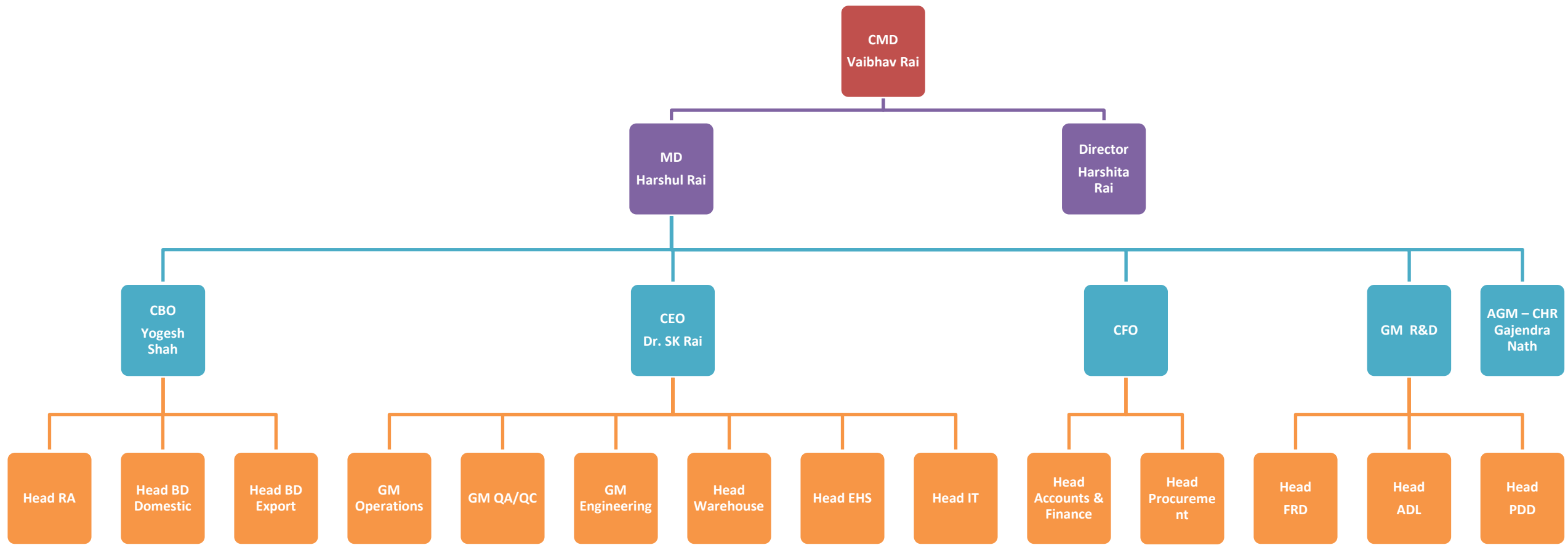
Capsule Filling Machine with online metal detection



ALU ALU Packing Machine with BIS



Secondary Packing Hall





- A strong review system & Change control procedure in place to control laboratory system & Product Impact.
- SAP system under installation for material management & QMS.
- Qualified facilities & equipment are being used for testing and manufacturing the product.
- Failures are handled through a deviation system.
- Internal audit is conducted as per schedule to monitor plant compliance.
- Line clearance, material verification & in-process checks is part of production control.



- VMP
- Qualification Validation Procedure
- Cleaning Verification
- CAPA system
- Change Control Procedure
- OOS & OOT
- Investigation Procedure
- APQR
- Market Compliant



Instrument Lab



HPLC Lab (Shimadzu)



Wet Chemistry Lab



Wet Chemistry Lab



Polarimeter



GC (Shimadzu)



Stability Chamber



Incubator Room :

There are 4 Incubators, Qualified and Validated.

Microbiology is equipped with all basic instruments.

- Horizontal Autoclave (Make – Mack Pharma for sterilization and one for media discarding) required for Microbiology analysis of products, Environmental Monitoring, etc.
- Vertical Autoclave (Make–Mack Pharma)







25 years of experience in 3PL/4PL warehousing & Warehouse infrastructure

Combination of services : Third-party Logistics & Manufacturing

Industry standing & reputation in the logistics industry

Experience in working with top notch companies from different industries

Compliance savvy

Presence in 12 states in India. Having infrastructure about 2.5 million area.

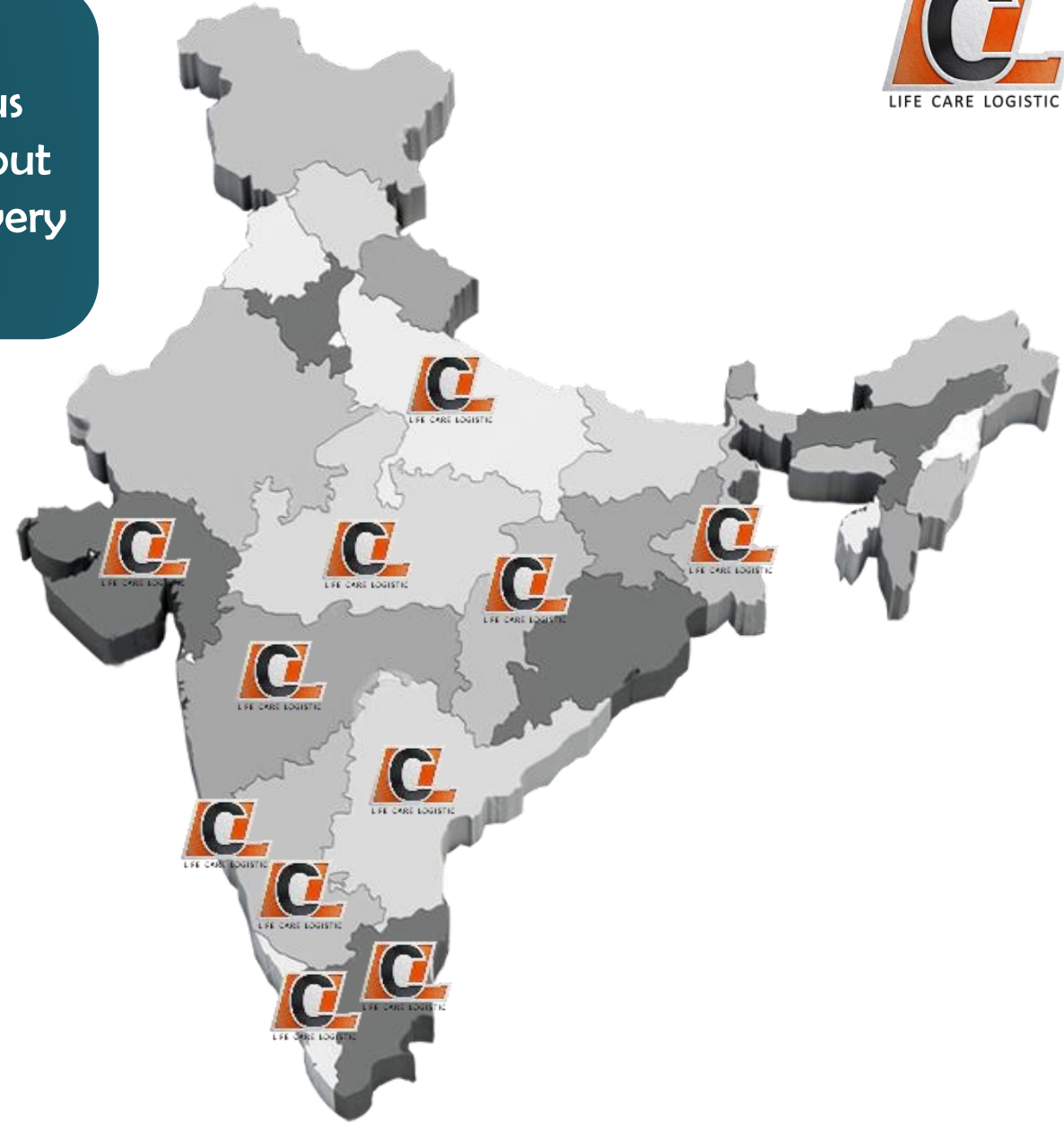
We possess an overbearing and striking list of **24 clients @ 66 account/locations** representing different verticals & industries.

OUR PRESENCE

With the HEAD OFFICE in Indore (M.P) and an enormous chain of local branches, across 11 states in India, carrying out different business operations, we are empowered with every ability and facility to execute our services.

States we are established -

1. Andhra Pradesh
2. Chhattisgarh
3. Goa
4. Gujarat
5. Karnataka
6. Kerala
7. Madhya Pradesh
8. Maharashtra
9. Tamil Nadu
10. Uttar Pradesh
11. West Bengal



WAREHOUSE MANAGEMENT



Warehousing works as an integral ingredient in the end-to-end 3PL/C&F Management, Our Solutions provides our customers with reliable warehousing-services based on superior facilities & technologies.

We believe in practicing the following warehousing practices at our best : **GWP/ SWOP** (Space-Wise assortment of SKUs, Inventory Management, Storage) , **Quality and Health Policy, Internal Audits**, **NDC / RDC** we provide services of handling goods from Mother Warehouses to other warehouses located at different parts of India with a client-specific resource-distribution ensuring their swift dispatch in line with the duly maintained inventory which forms the base of our Warehouse Management system



Our Logistics Solutions,
powered by deep logistical strength on a fleet of multi-utility

- ❑ GPS-empowered vehicles,
- ❑ Surface Transportation,
- ❑ Primary and Secondary Transportation
- ❑ Combination of transport-mediums,
- ❑ Goods-safety and Time-bound delivery

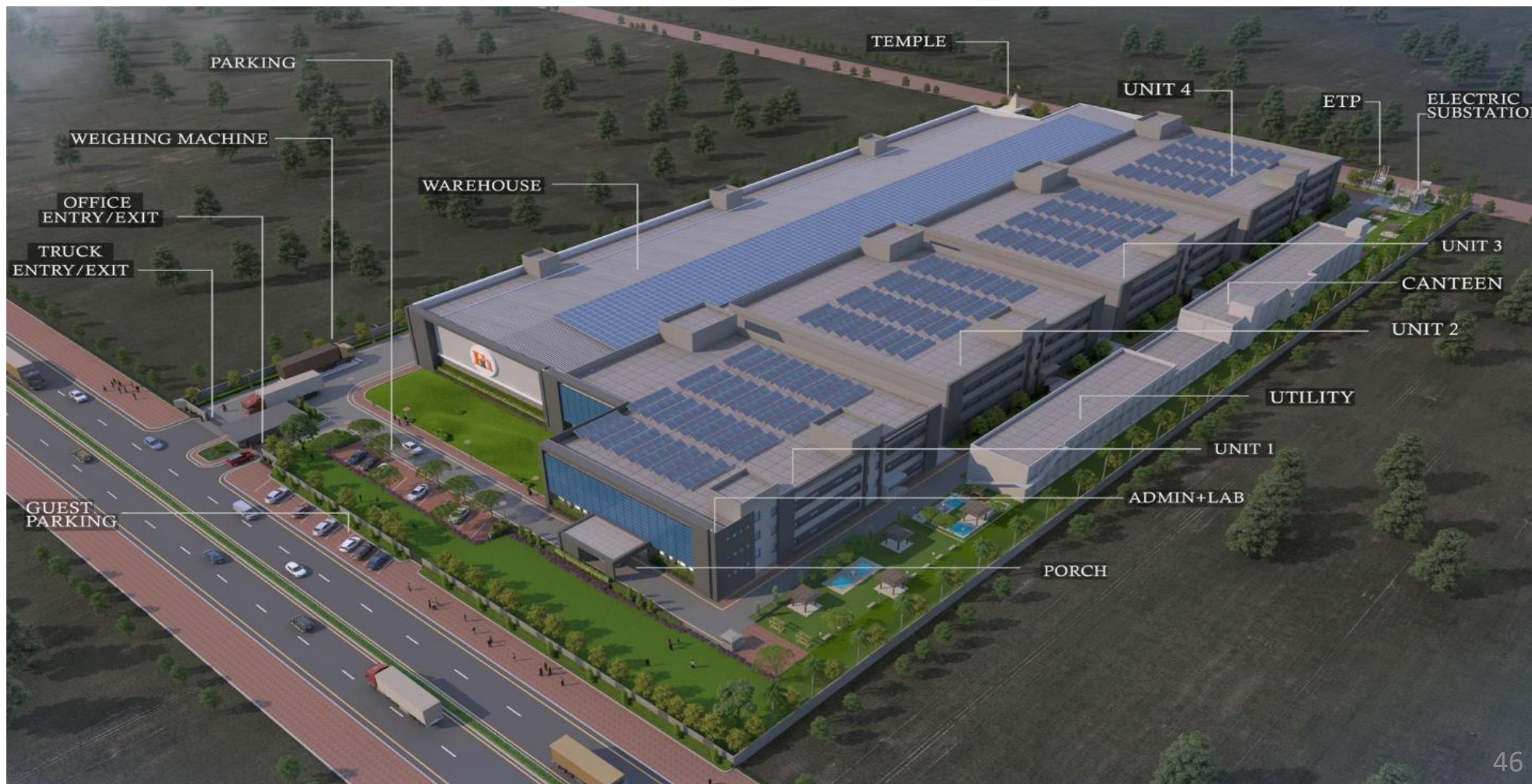


Shared warehouses with Value-Added Services : Kitting, Repacking ,Co -Packaging, Bundling, Shrink-wrapping, Barcoding

In House ERP : WMS and TMS



- As we are equipped with all the new and latest technologies, we can provide Glanbia with economies of scale as we are the **Asia's Biggest Capacity Nutraceutical Manufacturing Plant** by capacity than any other plant.
- We are into the logistics business from the past 25+ Years so we can support Glanbia in all the primary/secondary transportation, warehouse management, and material availability **ON TIME** by providing a combination of services we can give them cost benefits for the same.
- We have ample of space in our plant as well as at campus (15 Acres) with the possibility of future expansion. We can even dedicatedly build a plant for Glanbia.
- State of the art QA/QC & R&D facility to ensure the best quality of services.



Thank you

